



# NINGBO KETIAN MAGNET CO.,LTD



宁波科田磁业有限公司

NINGBO KETIAN MAGNET CO.,LTD

地址：宁波慈城城西西路1号

ADD: No.1 Chengxi West Road Cicheng, Ningbo, China

邮编 /P.C: 315034

电话 /Tel: 86-574-87574888 87563103

传真 /Fax: 86-574-87597123

网址 /Web: [www.ktmagnet.com](http://www.ktmagnet.com)

邮箱 /E-mail: [sales@ktmagnet.com](mailto:sales@ktmagnet.com)

[www.ktmagnet.com](http://www.ktmagnet.com)

# KEEP IMPROVING

## 持续改善

高效务实，团队协作  
规范管理，以人为本  
天天求变，永不满足，持续改善，细节之处见效益

Efficient and effective, Teamwork and cooperation,  
Standardized management, people - oriented  
Seeking change everyday, without self-satisfied pride, continuous  
improvement, keeping eyes on details







## GROUP INTRODUCTION 集团介绍

宁波科田磁业有限公司是宁波金田集团下属的高新技术企业。创建于1986年的金田集团，经过二十多年的发展，产业涵盖铜加工、稀土永磁材料制造、有色金属贸易等领域，以其2000多亩的占地面积、五十余亿元的资产总额、超三百亿的年产销量，在中国企业500强中排名连年大幅提升，成为中国铜加工行业循环经济的引领者。

Ningbo Ketian Magnet Co.,Ltd is a high-tech enterprise wholly owned by Ningbo Jintian Group which was established in 1986. Jintian Group has developed its business to cover several fields including copper processing, rare earth magnet manufacturing and non-ferrous metal trading etc. over the past twenty years. The group has grown up to be a leading company in copper recycling processing in China as well as holding a higher position on the top 500 ranking list of Chinese companies.

Currently the group owns a factory park of 2000 acres in Ningbo, China, with total assets of 5 billion RMB and annual turnover of 30 billion RMB.



# COMPANY INTRODUCTION

## 公司介绍

科田磁业致力于高性能烧结钕铁硼永磁材料研究、开发与生产。公司紧紧依靠科技进步，引进先进装备，实施精益生产，已形成年产各种牌号规格的烧结钕铁硼6000吨的生产规模。

公司秉承“天天求变、永不满足、勇于竞争、追求卓越”的企业精神，坚持“科技领先、开拓经营、以人为本、强化管理”的理念，确立“树一流精神、集一流人才、用一流管理、创一流企业”的目标，企业得到快速发展，目前产品广泛应用于汽车、电机、电声器材、IT产业、医疗器械等领域，客户遍及欧美、东南亚等地，深受用户亲睐。

永不满足、追求卓越，我们勇于面对未来的挑战，随时为您提供更可靠、优质、高性价比的产品及尽善尽美的服务。

Ningbo Ketian Magnet Co., Ltd specializes in the research, development, and production of sintered neodymium magnet. The company keeps focusing on technical innovation, equipment upgrading and lean production practice. It has possessed 6000 tons magnet production capacity to produce a wide range of various grades and specifications.

Ketian magnets have been delivered to many areas over the world including Europe, America, South East Asia for the major applications of automotive, motor, speakers, IT industry and medical equipment etc, and gains high reputation for its high quality and reliability, reasonable pricing and satisfactory services.





# PRODUCTION STRENGTH

生产实力



1

- 1.进口连续式熔炼炉（1吨）  
Imported Continuous Strip Casting Furnace(1 Ton)
- 2.全自动压机  
Automatic Compaction Machine
- 3.等静压  
Isostatic Pressing
- 4.全密封烧结炉  
Fully Sealed Sintering Furnace



2



3



4



# PRODUCTION STRENGTH

生产实力

进口400气流磨  
Imported Jet Milling Machine (Model 400)



1. 烧结炉  
Sintering Furnace
2. 切片生产线  
Slicing
3. 电镀生产线  
Coating
4. 洁净包装车间  
Clean Room





# QUALITY MANAGEMENT

品质管理

科田磁业已通过ISO9001：2008，ISO/TS16949：2009及ISO14001认证，完善的体系、高素质的队伍，成就了科田磁业的品质管理。从原材料进厂检验至成品包装出库，十几道的检验把关，一切只为满足客户需求！

The company has been certified by ISO9001:2008, ISO/TS16949:2009 and ISO14001. With the control systems well established as well as the competencies of the quality team, Ketian achieves a high standard on quality management, and furthermore, the concept of "Customer Orientation" drives Ketian to pursue continuous improvement on product quality.

## 质量管理 & 品质保证 QUALITY CONTROL & ASSURANCE





**N 系列牌号磁体的磁性能** Magnetic properties of N-series Magnet

序号 No	牌号 Grade	性能 Magnetic properties				最高工作 温度, T <sub>w</sub> , °C Working Temp., T <sub>w</sub> , °C
		剩磁感应强度 Br mT, (kGs) Remanence, Br mT or kGs	矫顽力, H <sub>cb</sub> kA/m, (kOe) Coercivity, H <sub>cb</sub> kA/m or kOe	内禀矫顽力, H <sub>cj</sub> kA/m, (kOe) Intrinsic Coercivity, H <sub>cj</sub> kA/m or kOe	最大磁能积 (BH) <sub>max</sub> , kJ/ m <sup>3</sup> (MGOe) Maximum Energy Product, (BH) <sub>max</sub> , kJ/m <sup>3</sup> or MGOe	
1	N55	1470-1520 (14.7-15.3)	≥860 (≥10.8)	≥876 (≥11)	414-438 (52-56)	70
2	N52	1430-1480 (14.3-14.8)	≥860 (≥10.8)	≥876 (≥11)	398-422 (50-53)	70
3	N50	1400-1450 (14.0-14.5)	≥860 (≥10.8)	≥960 (≥12)	382-406 (48-51)	70
4	N48	1380-1420 (13.8-14.2)	≥836 (≥10.5)	≥900 (≥11)	366-390 (46-49)	80
5	N45	1320-1380 (13.2-13.8)	≥876 (≥11.0)	≥960 (≥12)	342-366 (43-46)	80
6	N42	1280-1320 (12.8-13.2)	≥923 (≥11.6)	≥960 (≥12)	318-342 (40-43)	80
7	N40	1250-1280 (12.5-12.8)	≥923 (≥11.6)	≥960 (≥12)	302-326 (38-41)	80
8	N38	1220-1250 (12.2-12.5)	≥899 (≥11.3)	≥960 (≥12)	287-310 (36-39)	80
9	N35	1170-1210 (11.7-12.2)	≥868 (≥10.9)	≥960 (≥12)	263-287 (33-36)	80
10	N33	1130-1180 (11.3-11.8)	≥836 (≥10.5)	≥960 (≥12)	247-270 (31-34)	80
11	N30	1080-1130 (10.8-11.3)	≥796 (≥10)	≥960 (≥12)	223-247 (28-31)	80

**M 系列牌号磁体的磁性能** Magnetic properties of M-series Magnet

序号 No	牌号 Grade	性能 Magnetic properties				最高工作 温度, T <sub>w</sub> , °C Working Temp., T <sub>w</sub> , °C
		剩磁感应强度 Br mT, (kGs) Remanence, Br mT or kGs	矫顽力, H <sub>cb</sub> kA/m, (kOe) Coercivity, H <sub>cb</sub> kA/m or kOe	内禀矫顽力, H <sub>cj</sub> kA/m, (kOe) Intrinsic Coercivity, H <sub>cj</sub> kA/m or kOe	最大磁能积 (BH) <sub>max</sub> , kJ/ m <sup>3</sup> (MGOe) Maximum Energy Product, (BH) <sub>max</sub> , kJ/m <sup>3</sup> or MGOe	
2	N52M	1430-1480 (14.3-14.8)	≥1035 (≥13.0)	≥1114 (≥14)	398-414 (50-52)	100
3	N50M	1400-1450 (14.0-14.5)	≥1035 (≥13.0)	≥1114 (≥14)	382-406 (48-51)	100
4	N48M	1360-1430 (13.7-14.3)	≥1027 (≥12.9)	≥1114 (≥14)	366-390 (46-49)	100
5	N45M	1320-1380 (13.2-13.8)	≥995 (≥12.5)	≥1114 (≥14)	342-366 (43-46)	100
6	N42M	1280-1320 (12.8-13.2)	≥955 (≥12.0)	≥1114 (≥14)	318-342 (40-43)	100
7	N40M	1250-1280 (12.5-12.8)	≥923 (≥11.6)	≥1114 (≥14)	302-326 (38-41)	100
8	N38M	1220-1250 (12.2-12.5)	≥899 (≥11.3)	≥1114 (≥14)	287-310 (36-39)	100
9	N35M	1170-1220 (11.7-12.2)	≥868 (≥10.9)	≥1114 (≥14)	263-287 (33-36)	100
10	N33M	1130-1180 (11.3-11.8)	≥836 (≥10.5)	≥1114 (≥14)	247-270 (31-34)	100
11	N30M	1080-1130 (10.8-11.3)	≥796 (≥10)	≥1114 (≥14)	223-247 (28-31)	100

**H 系列牌号磁体的磁性能** Magnetic properties of H-series Magnet

序号 No	牌号 Grade	性能 Magnetic properties				最高工作 温度, T <sub>w</sub> , °C Working Temp., T <sub>w</sub> , °C
		剩磁感应强度 Br mT, (kGs) Remanence, Br mT or kGs	矫顽力, H <sub>cb</sub> kA/m, (kOe) Coercivity, H <sub>cb</sub> kA/m or kOe	内禀矫顽力, H <sub>cj</sub> kA/m, (kOe) Intrinsic Coercivity, H <sub>cj</sub> kA/m or kOe	最大磁能积 (BH) <sub>max</sub> , kJ/ m <sup>3</sup> (MGOe) Maximum Energy Product, (BH) <sub>max</sub> , kJ/m <sup>3</sup> or MGOe	
2	N50H	1400-1450 (14.0-14.5)	≥1035 (≥13.0)	≥1274 (≥16)	382-406 (48-51)	120
3	N48H	1370-1430 (13.7-14.3)	≥1035 (≥13.0)	≥1274 (≥16)	366-390 (46-49)	120
4	N46H	1330-1380 (13.3-13.8)	≥1018 (≥12.8)	≥1274 (≥16)	350-374 (44-47)	120
5	N45H	1330-1380 (13.3-13.8)	≥1010 (≥12.7)	≥1353 (≥17)	342-366 (43-46)	120
6	N44H	1310-1360 (13.1-13.6)	≥1003 (≥12.6)	≥1353 (≥17)	326-358 (42-45)	120
7	N42H	1280-1320 (12.8-13.2)	≥995 (≥12.5)	≥1353 (≥17)	318-342 (40-43)	120
8	N40H	1250-1280 (12.5-12.8)	≥940 (≥11.8)	≥1353 (≥17)	302-326 (38-41)	120
9	N38H	1220-1250 (12.2-12.5)	≥899 (≥11.3)	≥1353 (≥17)	287-310 (36-39)	120
10	N35H	1170-1220 (11.7-12.2)	≥876 (≥11.0)	≥1353 (≥17)	263-287 (33-36)	120
11	N33H	1130-1180 (11.3-11.8)	≥844 (≥10.6)	≥1353 (≥17)	247-271 (31-34)	120
12	N30H	1080-1130 (10.8-11.3)	≥812 (≥10.2)	≥1353 (≥17)	223-247 (28-31)	120

**SH 系列牌号磁体的磁性能** Magnetic properties of SH-series Magnet

序号 No	牌号 Grade	性能 Magnetic properties				最高工作 温度, T <sub>w</sub> , °C Working Temp., T <sub>w</sub> , °C
		剩磁感应强度 Br mT, (kGs) Remanence, Br mT or kGs	矫顽力, H <sub>cb</sub> kA/m, (kOe) Coercivity, H <sub>cb</sub> kA/m or kOe	内禀矫顽力, H <sub>cj</sub> kA/m, (kOe) Intrinsic Coercivity, H <sub>cj</sub> kA/m or kOe	最大磁能积 (BH) <sub>max</sub> , kJ/ m <sup>3</sup> (MGOe) Maximum Energy Product, (BH) <sub>max</sub> , kJ/m <sup>3</sup> or MGOe	
1	N48SH	1370-1430 (13.7-14.3)	≥1003 (≥12.6)	≥1600 (≥20)	366-390 (46-49)	150
2	N45SH	1320-1380 (13.2-13.8)	≥1003 (≥12.6)	≥1600 (≥20)	342-366 (43-46)	150
3	N44SH	1310-1350 (13.1-13.5)	≥1003 (≥12.6)	≥1600 (≥20)	334-358 (42-45)	150
4	N42SH	1280-1320 (12.8-13.2)	≥995 (≥12.5)	≥1600 (≥20)	318-342 (40-43)	150
5	N40SH	1250-1280 (12.5-12.8)	≥947 (≥11.9)	≥1600 (≥20)	302-326 (38-41)	150
6	N38SH	1220-1250 (12.2-12.5)	≥931 (≥11.7)	≥1600 (≥20)	287-310 (36-39)	150
7	N35SH	1170-1220 (11.7-12.2)	≥907 (≥11.4)	≥1600 (≥20)	263-287 (33-36)	150
8	N33SH	1130-1170 (11.3-11.7)	≥844 (≥10.6)	≥1600 (≥20)	247-271 (31-34)	150
9	N30SH	1080-1130 (10.8-11.3)	≥804 (≥10.1)	≥1600 (≥20)	223-247 (28-31)	150

**UH 系列牌号磁体的磁性能** Magnetic properties of UH-series Magnet

序号 No	牌号 Grade	性能 Magnetic properties				最高工作 温度, T <sub>w</sub> , °C Working Temp., T <sub>w</sub> , °C
		剩磁感应强度 Br mT, (kGs) Remanence, Br mT or kGs	矫顽力, H <sub>cb</sub> kA/m, (kOe) Coercivity, H <sub>cb</sub> kA/m or kOe	内禀矫顽力, H <sub>cj</sub> kA/m, (kOe) Intrinsic Coercivity, H <sub>cj</sub> kA/m or kOe	最大磁能积 (BH) <sub>max</sub> , kJ/ m <sup>3</sup> (MGOe) Maximum Energy Product, (BH) <sub>max</sub> , kJ/m <sup>3</sup> or MGOe	
1	N45UH	1310-1350 (13.1-13.5)	≥1003 (≥12.6)	≥2000 (≥25)	334-358 (42-45)	180
2	N42UH	1280-1320 (12.8-13.2)	≥907 (≥11.4)	≥2000 (≥25)	318-342 (40-43)	180
3	N40UH	1240-1280 (12.4-12.8)	≥907 (≥11.4)	≥2000 (≥25)	302-326 (38-41)	180
4	N38UH	1220-1250 (12.2-12.5)	≥907 (≥11.4)	≥2000 (≥25)	287-310 (36-39)	180
5	N35UH	1180-1220 (11.8-12.2)	≥875 (≥11.0)	≥2000 (≥25)	263-287 (33-36)	180
6	N33UH	1130-1170 (11.3-11.7)	≥844 (≥10.6)	≥2000 (≥25)	247-271 (31-34)	180
7	N30UH	1080-1130 (10.8-11.3)	≥835 (≥10.5)	≥2000 (≥25)	223-247 (28-31)	180
8	N28UH	1020-1080 (10.5-10.8)	≥764 (≥9.6)	≥2000 (≥25)	207-239 (26-30)	180

**EH/AH 系列牌号磁体的磁性能** Magnetic properties of EH/AH-series Magnet

序号 No	牌号 Grade	性能 Magnetic properties				最高工作 温度, T <sub>w</sub> , °C Working Temp., T <sub>w</sub> , °C
		剩磁感应强度 Br mT, (kGs) Remanence, Br mT or kGs	矫顽力, H <sub>cb</sub> kA/m, (kOe) Coercivity, H <sub>cb</sub> kA/m or kOe	内禀矫顽力, H <sub>cj</sub> kA/m, (kOe) Intrinsic Coercivity, H <sub>cj</sub> kA/m or kOe	最大磁能积 (BH) <sub>max</sub> , kJ/ m <sup>3</sup> (MGOe) Maximum Energy Product, (BH) <sub>max</sub> , kJ/m <sup>3</sup> or MGOe	
1	N42EH	1280-1310 (12.8-13.1)	≥907 (≥11.4)	≥2388 (≥30)	320-340 (38-41)	200
2	N40EH	1240-1280 (12.5-12.8)	≥907 (≥11.4)	≥2388 (≥30)	302-326 (38-41)	200
3	N38EH	1220-1250 (12.2-12.5)	≥907 (≥11.4)	≥2388 (≥30)	287-310 (36-39)	200
4	N35EH	1170-1220 (11.7-12.2)	≥876 (≥11.0)	≥2388 (≥30)	263-287 (33-36)	200
5	N33EH	1130-1170 (11.3-11.7)	≥812 (≥10.2)	≥2388 (≥30)	247-271 (31-34)	200
6	N30EH	1080-1130 (10.8-11.3)	≥812 (≥10.2)	≥2388 (≥30)	223-247 (28-31)	200
7	N28EH	1040-1090 (10.4-10.9)	≥780 (≥9.8)	≥2400 (≥30)	207-231 (26-29)	200
8	N38AH	1220-1250 (12.2-12.5)	≥907 (≥11.4)	≥2706 (≥34)	287-310 (36-39)	240
9	N35AH	1170-1220 (11.7-12.2)	≥812 (≥10.2)	≥2785 (≥35)	263-287 (33-36)	240
10	N33AH	1130-1170 (11.3-11.7)	≥812 (≥10.2)	≥2785 (≥35)	247-271 (31-34)	240
11	N30AH	1080-1130 (10.8-11.3)	≥812 (≥10.2)	≥2785 (≥35)	223-247 (28-31)	240

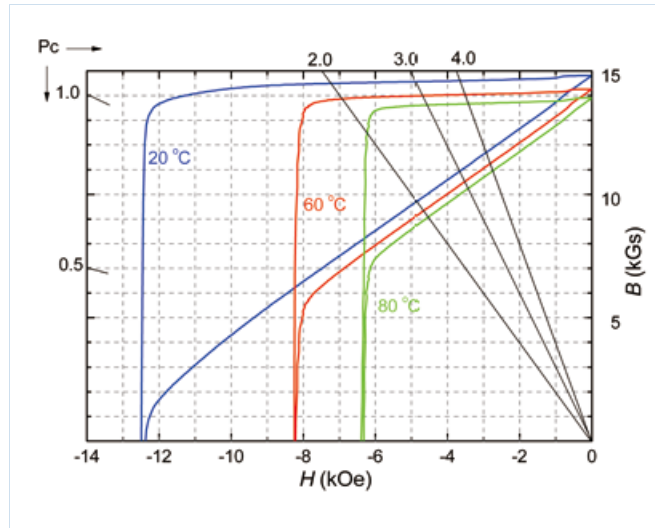


# TECHNICAL REQUIREMENTS

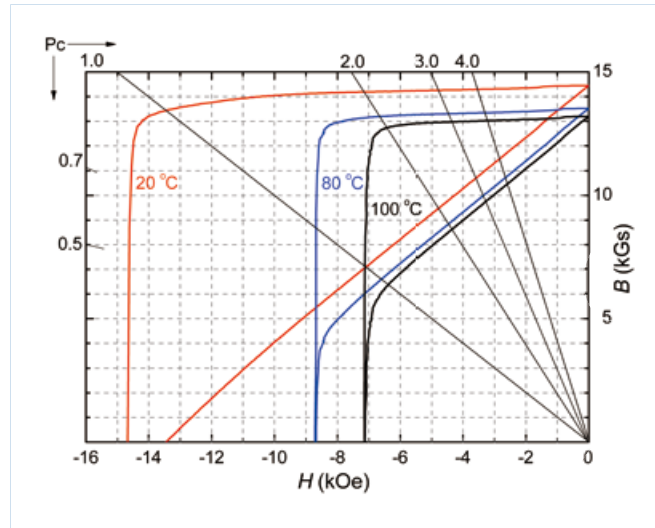
## 磁体的技术要求



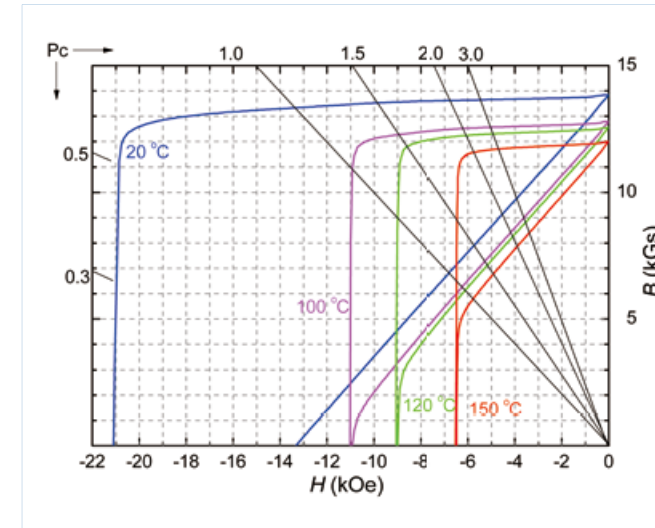
• N55 Demagnetization Curve ( || - ⑦ )



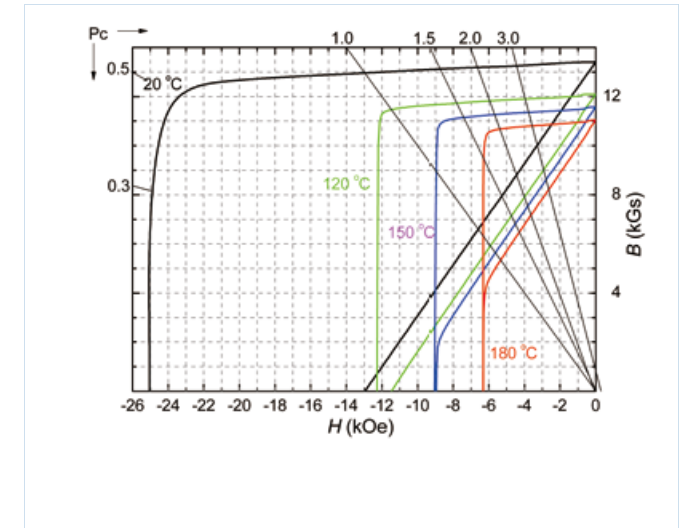
• 52M Demagnetization Curve ( || - ⑥ )



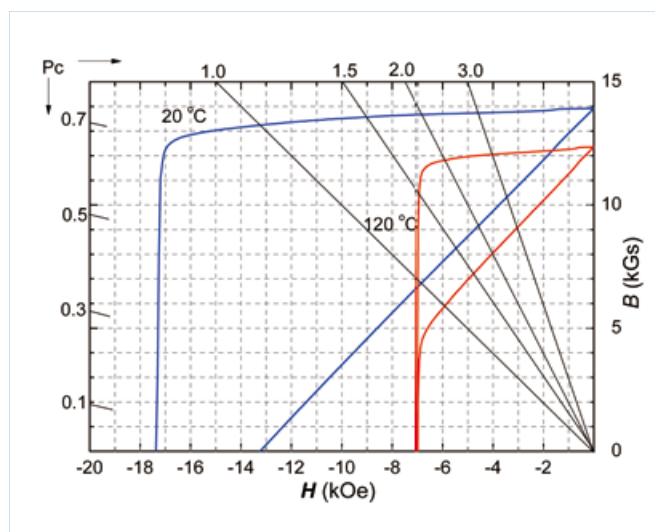
• 48SH Demagnetization Curve ( || - ④ )



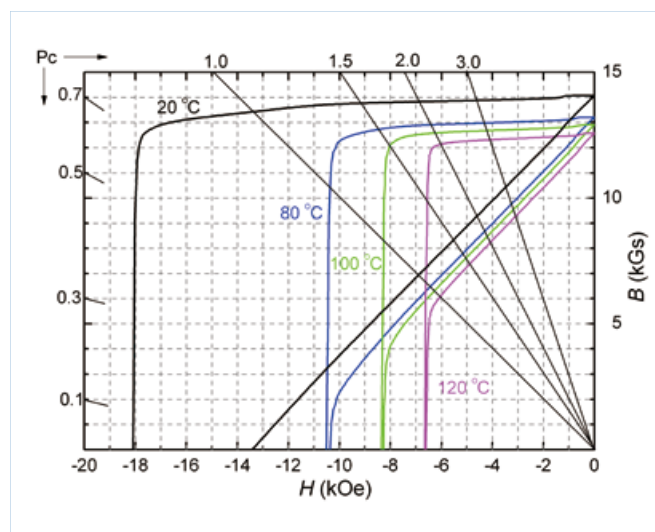
• 45UH Demagnetization Curve ( || - ③ )



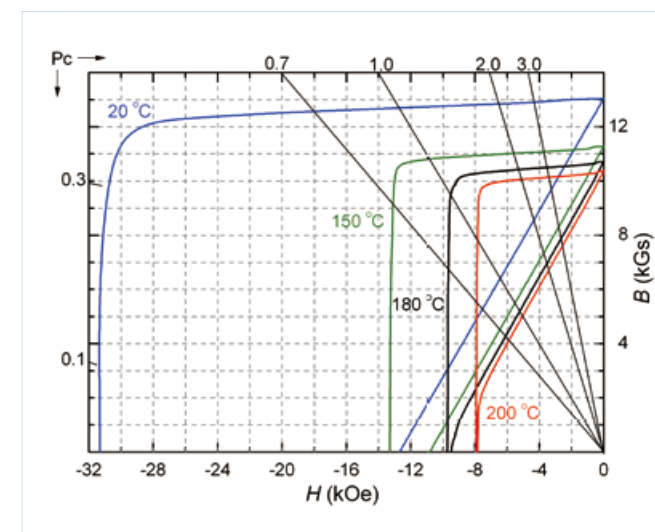
• Dy48H Demagnetization Curve ( || - ⑥ )



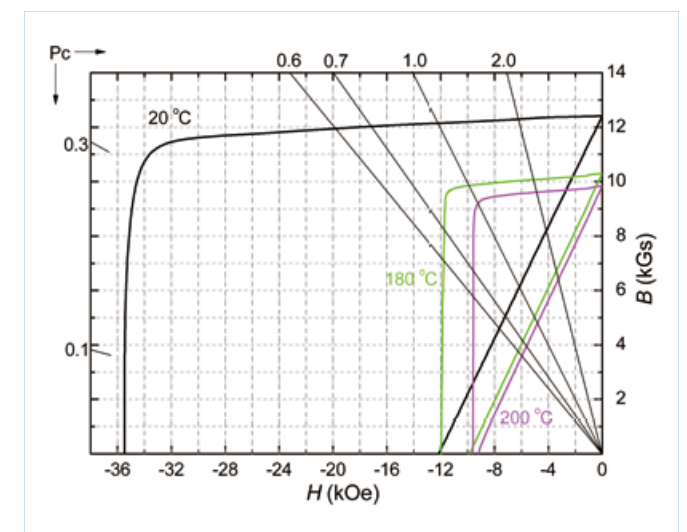
• 50H Demagnetization Curve ( || - ⑤ )



• 42EH Demagnetization Curves ( || - ② )



• 38AH Demagnetization Curves ( || - ① )





# MAJOR APPLICATIONS

应用领域



IT产业  
IT industry



电声器材  
Acoustics



马达电机  
Motor



汽车工业  
Automotive



医疗领域  
Medial



风力发电  
Wind  
Generation